

Grant County International Airport Industrial Park

For Lease

For Lease

Building #:

3401

Square Feet

101,970

Construction Type:

Metal Structure

Lease Rate:

*per month, plus Washington State
Leasehold Tax (currently 12.84%)*

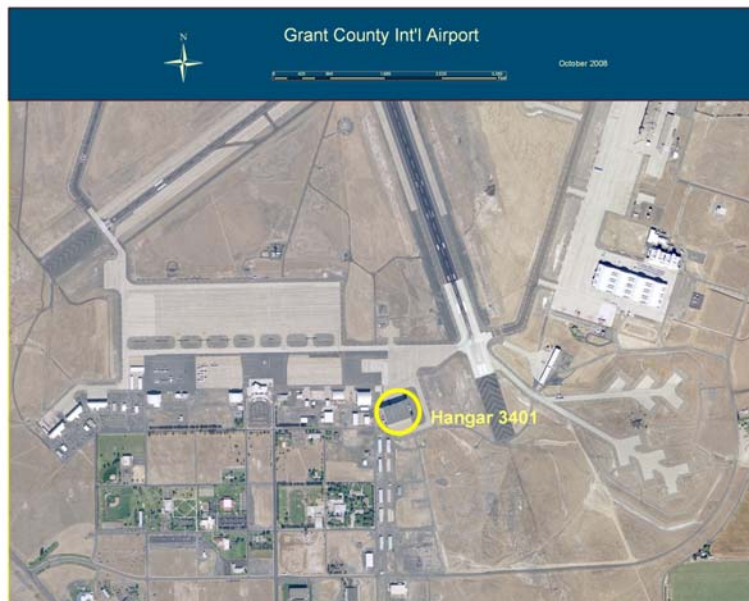
Moses Lake, Washington 98837

High Bay for B-747 or smaller aircraft. Includes shops and offices.

Exterior Photo:



Interior Photo:



*Port of Moses Lake
7810 Andrews Street N.E.
Moses Lake, WA 98837*



*www.portofmoseslake.com
info@portofmoseslake.com
(509) 762-5363*

CAD Drawing:

