

# Grant County International Airport Industrial Park

*For Lease*

*For Lease*

**Building #:**  
**2203**

**Square Feet**  
**40,400**

**Construction Type:**  
**wood truss / metal siding**

**Lease Rate:**  
*per month, plus Washington State Leasehold Tax (currently 12.84%)*

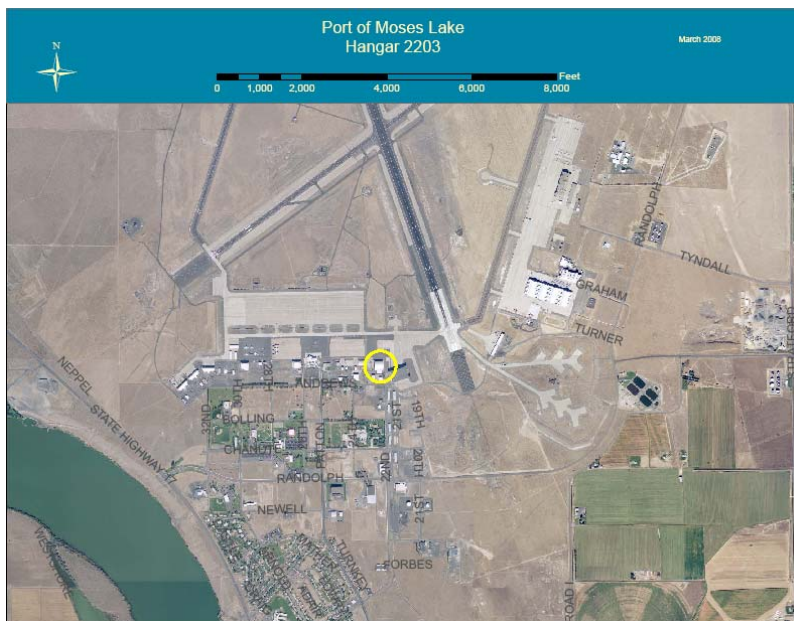
**Moses Lake, Washington 98837**

Large hangar suitable for B-727, DC-9, or smaller aircraft. Includes shop and office space. Building is heated. Access to Grant County Int'l Airport. See more photos at <http://picasaweb.google.com/portofmoseslake/PortOfMosesLakeHangar2203>

**Exterior Photo:**



**Interior Photo:**

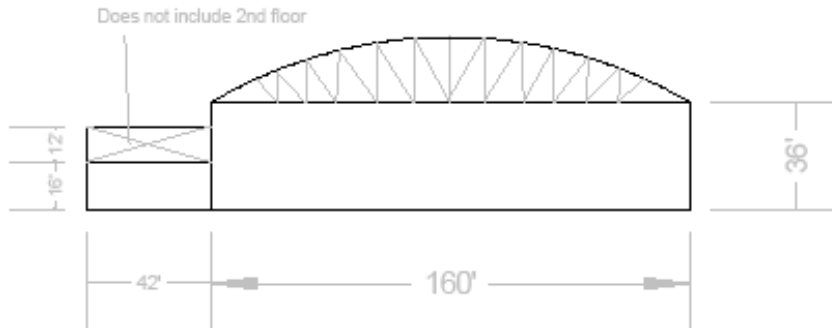
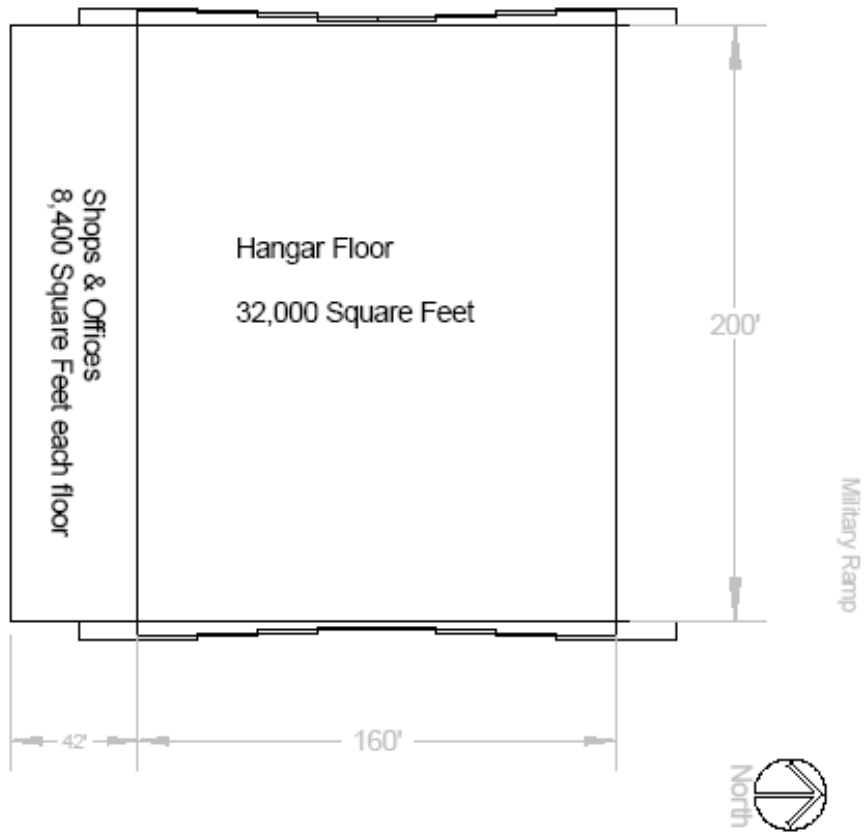


*Port of Moses Lake*  
7810 Andrews Street N.E.  
Moses Lake, WA 98837



[www.portofmoseslake.com](http://www.portofmoseslake.com)  
[info@portofmoseslake.com](mailto:info@portofmoseslake.com)  
(509) 762-5363

*CAD Drawing:*



**Port of Moses Lake  
Hangar 2203**

Dimensions are approximate